

INTRODUCTION

The **computerized medical record** is an indispensable tool. The TSE Local Health Authority has begun a gradual and **steady transition from paper-based to computerized nursing records**, resorting to a platform that enables the use of **NANDA-I nursing diagnoses**

AIMS

Computerize the first two stages of the nursing process:

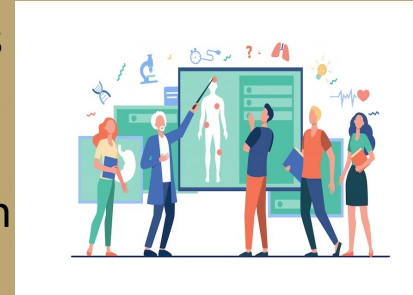
- ❑ the **initial assessment of care needs** (M.Gordon's functional model)
- ❑ the **enunciation of the NANDA-I Nursing Diagnoses**, for all 40,000 ca inpatients in the medical area distributed over 13 hospitals located in 11000 km2.

Computerization of NANDA-I nursing diagnosis in the medical area of the USL Tuscany Sud-Est

Vianella Agostinelli, Eleonora Salutini

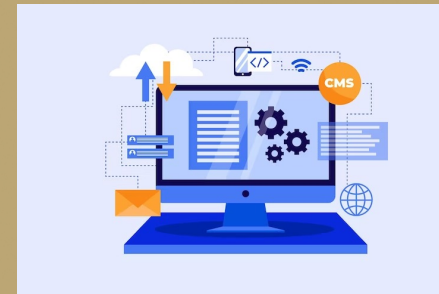
METHODOLOGY

A group of clinical nurses was established who were provided with **advanced knowledge in care planning** in a training course



This enabled them to **identify the prevalent nursing diagnoses** based on the case histories treated in the different hospitals

Then, with the information acquired, the **IT platform containing the care records** was revised



RESULTS

The first two phases of the nursing process (J.Wilkinson), **were computerized for all medical areas.**



IMPACT

The **computerized platform** has made available many **useful care data to improve the individualized nursing process and the evaluation of individual performance**

