




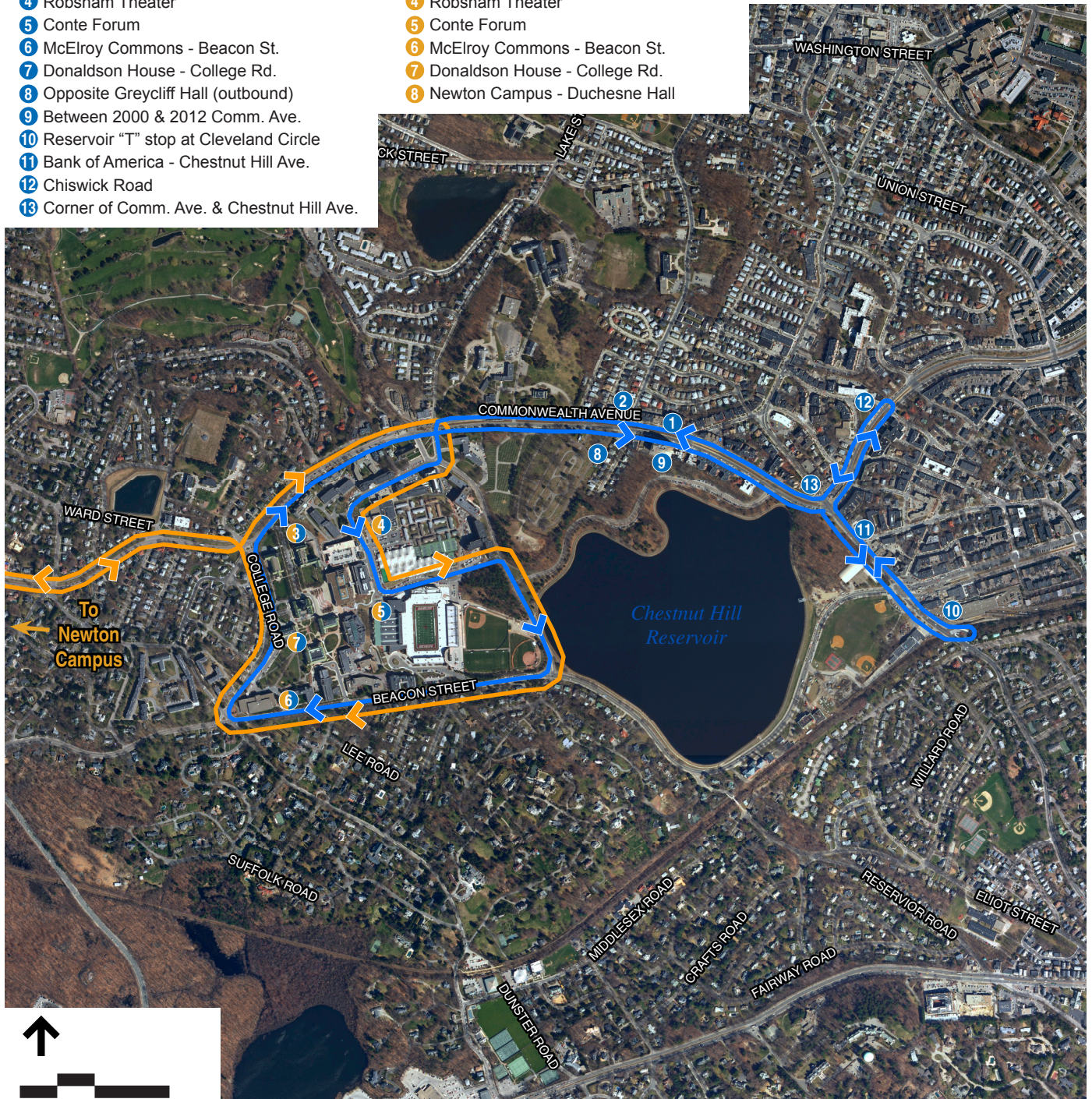
Boston/Commonwealth Avenue Shuttle Stops

- 1 South Street
- 2 Greycliff Hall (inbound)
- 3 Chestnut Hill Campus - Main Gate
- 4 Robsham Theater
- 5 Conte Forum
- 6 McElroy Commons - Beacon St.
- 7 Donaldson House - College Rd.
- 8 Opposite Greycliff Hall (outbound)
- 9 Between 2000 & 2012 Comm. Ave.
- 10 Reservoir "T" stop at Cleveland Circle
- 11 Bank of America - Chestnut Hill Ave.
- 12 Chiswick Road
- 13 Corner of Comm. Ave. & Chestnut Hill Ave.

Newton Shuttle Stops

- 1 Newton Campus - Stuart Hall
- 2 Newton Campus - Main Gate
- 3 Chestnut Hill Campus - Main Gate
- 4 Robsham Theater
- 5 Conte Forum
- 6 McElroy Commons - Beacon St.
- 7 Donaldson House - College Rd.
- 8 Newton Campus - Duchesne Hall

-  Boston/Commonwealth Avenue Shuttle Route
-  Newton Shuttle Route
-  Shuttle Stop



Source: MassGIS 2005 digital aerial, Boston, Massachusetts

Vanasse Hangen Brustlin, Inc.

Shuttle Bus Services
 Boston College
 Institutional Master Plan Notification Form

Figure 6-2